

INFORMATION

Location

Netherlands Cancer Institute
Piet Borst Auditorium
Plesmanlaan 121
1066 CX Amsterdam
The Netherlands

Routing

For routing directions, please visit:
www.nki.nl or www.avl.nl > contact.

Registration

Registration exclusively via the online registration form: www.avl.nl/topmenu/over-avl/symposia-en-congressen/breast-surgery-workshop/

Hotel

Hotel arrangements to be made by course participant. The course organization recommends the nearby Hotel Artemis, www.artemisamsterdam.nl.

When

Thursday, November 24, 2016,
10.00 - 17.30 hrs.

Payment

Registration fee is € 350,-. This fee includes: workshop, workshop information, lunch, drinks and snacks.

Accreditation

Accreditation is sought through the Accreditation Council of Oncology in Europe (ACOE).

Faculty

Surgical oncologists AVL:

Marie Jeanne Vrancken Peeters,
Emiel Rutgers, Hester Oldenburg,
Frederieke van Duijnhoven,
Jos van der Hage.

Surgical oncologists RVI:

Henry Cain, Nader Khonj.

Radiologist: Claudette Loo

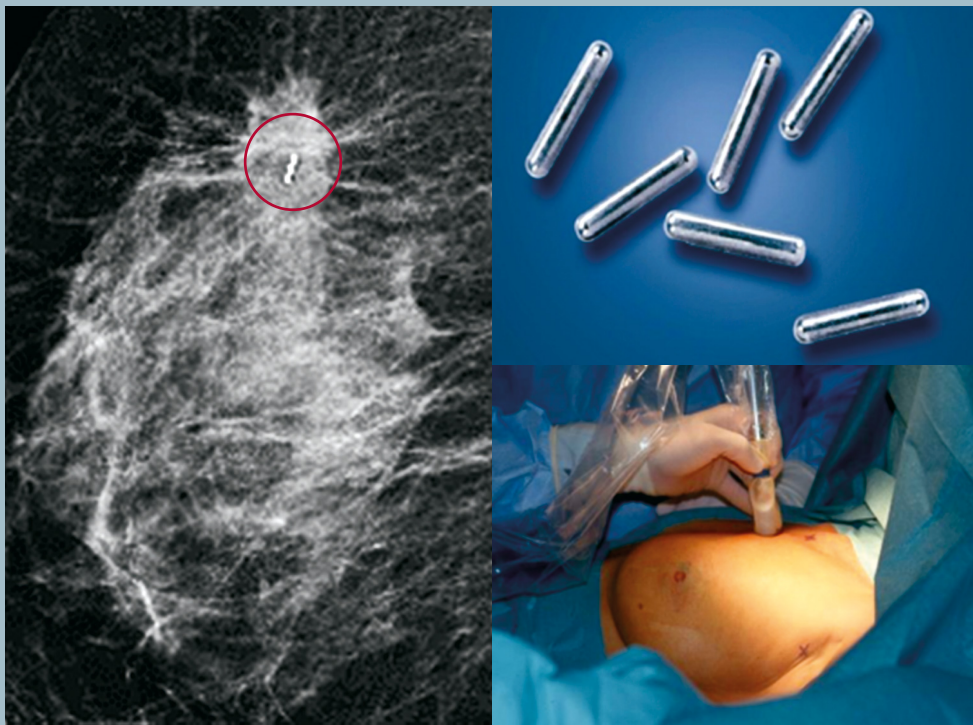
Department of radiation safety:
Linda Janssen.

Department of pathology: Emilie Groen.

Department of nuclear medicine:
Bas Pouw, Marcel Stokkel.

More information

For more information and/or questions regarding your registration, please contact Jolanda Rimmelzwaal via e-mail: j.rimmelzwaal@nki.nl or tel. +31 (0)20 512 2632.



WORKSHOP I-125 SEED GUIDED SURGERY FOR BREAST CANCER

Thursday, November 24, 2016


Netherlands Cancer Institute, Amsterdam



The number of patients with non-palpable breast disease is steadily increasing due to improved imaging techniques for mammographic screening but also because of the more frequent use of primary systemic treatment prior to breast cancer surgery.

Radioactive seed localization is an attractive method for localization of breast lesions and lymph nodes in order to facilitate precise primary surgery of non-palpable breast lesions and patient tailored loco regional breast surgery after primary systemic treatment for breast cancer. This workshop will consist of didactic lectures as well as an optional hands-on skills session.

Topics include

- Radiation safety issues and protocols
-  How to start radioactive seed localization in your institute
- Indications for radioactive seed localization (breast and lymph nodes; the MARI procedure = Marking the Axillary Node with a radioactive Iodine seed)
- Recent research in this area

Intended audience

This workshop is designed to provide knowledge and techniques to breast cancer teams (including radiologists, surgeons, nuclear medicine consultants and radiation safety officers) in order to enable initiation of radioactive seed localization in their daily clinical practice.

PROGRAM

Thursday, November 24, 2016

09.00 - 09.30 hrs

Arrival and surgical safety
issues participants

09.30 - 10.00 hrs

Introduction
Marie-Jeanne Vrancken Peeters, surgeon

10.00 - 10.30 hrs

Radiation safety issues and
protocols in the Netherlands
Linda Janssen, radiation safety officer

10.30 - 11.00 hrs

The role of the radiologist
Claudette Loo, radiologist

11.00 - 11.15 hrs

Coffee break

11.15 - 11.45 hrs

The UK experience
Henry Cain, Nader Khonj, surgeon

11.45 - 12.00 hrs

Discussion and case presentation
Marie Jeanne Vrancken Peeters, surgeon

12.00 - 13.00 hrs

Lunch

13.00 - 14.30 hrs

Placement of seeds –
live demonstration of the
procedure at Radiology department
Claudette Loo, radiologist

13.00 - 14.30 hrs

I-125 guided surgery (WLE J125
plus SN and MRI procedure) –
live demonstration at OR
Marie-Jeanne Vrancken Peeters, surgeon

14.30 - 15.00 hrs

The role of the pathologist
Emilie Groen, pathologist

15.30 - 16.00 hrs

Spect and I-125 seed nuclear affairs
Bas Pouw, MD, PhD student

16.00 - 16.30 hrs

What we have achieved,
results 2008-2016
Marie-Jeanne Vrancken Peeters, surgeon

17.00 hrs

Discussion during drinks and snacks

18.00 hrs

Dinner